



About the building and founder

Museum founder Anna Rice Cooke started collecting art in the 1880s to decorate her wood Victorian house that stood on this property. When her art collection outgrew her home, Cooke decided to create Hawai'i's first visual arts museum, with artworks reflecting the multicultural makeup of the islands, for the children of Hawai'i. She donated the land for the museum along with 500 works—many of which are still highlights of the museum collection. Cooke enlisted New York architect Bertram Goodhue to design the plans for a series of galleries that surround the museum's courtyards, taking advantage of the natural light and tropical climate and echoing Hawai'i's location in the middle of the Pacific. Goodhue employed elements of Chinese and Mediterranean architecture, along with a type of pitched roof popular in Hawai'i, to create a new style of Hawai'i architecture. Materials used include paving stones made from Chinese granite slabs (which in the early 1800s served as ballast in ships transporting Hawaiian sandalwood), Chinese green glazed tiles, Hawaiian lava rock from Kaimuki, and flagstones cut from aggregate stone from Moloka'i. After Goodhue's death in 1924, the museum expanded with the opening of the Henry R. Luce Pavilion Complex, designed by Hawai'i architect John Hara.

Honolulu Museum of Art Café

One of the most popular lunch destinations in town, the HoMA Café serves contemporary, casual cuisine, from salads and sandwiches to composed plates and desserts. Currently offering take out options with limited socially distanced self-seating available.

No admission fee to visit the Café.
For more information and to order online:
honolulumuseum.org/cafe

Hours:
Thursday–Sunday: 11am–2pm

The Coffee Bar
Refuel with coffee, grab-and-go menu items, or a glass of wine in the Palm Courtyard.

No admission fee to visit the Coffee Bar.

Hours:
Thursday & Sunday: 10am–5:30pm
Friday & Saturday: 10am–8:30pm

The Museum Shop
Browse art books, contemporary jewelry, objects and textiles by local artisans, stationery, T-shirts, games and art supplies for children.

No admission fee to visit the Shop.

Open during museum hours.



Health & Safety Measures



Masks are required
Please use face masks while at the museum, with the exception of young children and those with conditions that affect breathing.



Enjoy the art, six feet apart
Please keep a minimum distance of six feet from anyone outside of your party at all times. Maximum occupancy is posted for each gallery.



One-way flow of traffic
Please observe directional signs throughout the galleries, and use the dedicated entrances and exits as marked.



Wash and disinfect your hands
Please wash your hands with soap for at least 20 seconds, and kindly use the disinfectant dispensers located throughout the museum. Common areas and high touch surfaces are sanitized regularly.



Contactless payment
If possible, please make payments by credit card.

The following amenities and events are temporarily on hold:

Robert Allerton Art Library
ARTafterDARK
Doris Duke Theatre
Honolulu Museum of Art School

808.532.8700
honolulumuseum.org
#MyHoMA

Admission

\$20 adults
\$10 Hawai'i residents with ID

Free for visitors age 18 and under

Free for members
Free the third Sunday of each month and every Friday from 4–6pm for Hawai'i residents with ID

Entry to the Shop, Café and Coffee Bar is free.

Honolulu Museum of Art Parking:

Parking lot is located behind Honolulu Museum of Art School, 1111 Victoria Street. There is an entrance on Beretania Street.

\$5 for first 5 hours
\$2 every additional 30 minutes

Hours

Honolulu Museum of Art
900 S Beretania St

Thursday: 10am–6pm
Friday: 10am–9pm
Saturday: 10am–9pm
Sunday: 10am–6pm

CLOSURES

Honolulu Museum of Art is closed Monday–Wednesday, January 1, July 4, Thanksgiving Day and Christmas Day.

Honolulu Museum of Art at First Hawaiian Center
999 Bishop St

Monday–Thursday: 8am–4pm
Friday: 8am–4:30pm

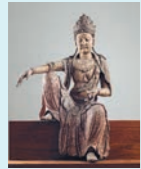
Parking in building



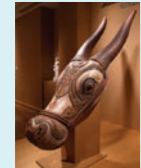
Highlights



1
Satoru Abe
The Wheel, 1973



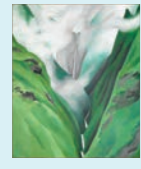
2
Guanyin, c. 1025



3
Nandi Head,
late 18th century



4
Theodore Wores
The Lei Maker, 1901



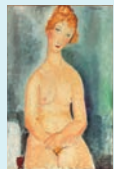
5
Georgia O'Keeffe
Waterfall—No. III—Tao Valley, 1939



6
Claude Monet
Water Lilies, 1917/19



7
Vincent van Gogh
Wheat Field, 1888



8
Amedeo Modigliani
Seated Nude, c. 1918

