



Building and architecture

New York architect Bertram Goodhue designed the plans for a series of galleries that surround museum courtyards, taking advantage of natural light and Hawai'i's temperate climate. The building's layout echoes Hawai'i's location in the middle of the Pacific: the Joanna Lau Sullivan Chinese Courtyard, surrounded by the Asian art galleries, sits to the west of the Central Courtyard, while the Mediterranean Courtyard, the center of the European and American art collection, sits to the east. Building materials include paving stones made from Chinese granite slabs (which in the early 1800s served as ballast in ships transporting Hawaiian sandalwood), Chinese green glazed tiles, Hawaiian lava rock from Kaimuki, and flagstones cut from aggregate stone from Moloka'i. After Goodhue's death in 1924, the project was completed by Hardie Phillip. In 2001, the museum expanded with the opening of the Henry R. Luce Pavilion Complex, designed by John Hara.

Anna Rice Cooke

Museum founder Anna Rice Cooke was born into a prominent missionary family on O'ahu, and grew up in a home that appreciated the arts. She started collecting artworks in the 1880s to decorate her Victorian house that previously stood on this property. Cooke became an astute and visionary art connoisseur. When her art collection outgrew her home, she decided to create Hawai'i's first visual arts museum, which would reflect the Islands' multicultural make-up. In 1920, she and her daughter Alice Spalding, her daughter-in-law Dagmar Cooke, and teacher Catharine Cox began to catalogue and research the collection, obtaining a charter for the museum from the Territory of Hawai'i in 1922. Cooke and her husband donated their Beretania Street land for the museum along with 500 works—many of which are still highlights of the HoMA collection.

Honolulu Museum of Art Café

For more than fifty years, the HoMA Café has served casual, contemporary cuisine and refreshments with island-style hospitality, perfectly complementing the museum experience. Open for lunch and Sunday brunch, the Café is committed to operating as sustainably as possible. Takeout is available. Reservations: 808.532.8734.

Hours

Lunch and brunch:
Wednesday–Sunday:
11am–3pm

HoMA Nights

Friday:
Bar service: 5–8:30pm
Bar bites: 5–7:30pm

The Coffee Bar

Refuel with artisanal coffee & tea beverages, local craft beer, wine, and seasonal to-go menu items in HoMA's shaded Palm Courtyard.

Hours

Wednesday, Thursday, Saturday & Sunday:
10am–5pm

Friday: 10am–8pm

The HoMA Shop

Browse art books, contemporary jewelry, stationery, objects and textiles by local artisans, art supplies, and crafts and books for children. Open during museum hours.

Museum tours

Make the most of your museum visit with tours of HoMA's collection and special exhibitions. **Free to join with museum admission.**
Tour times: Wednesday–Sunday: 11am and 2pm.
Tour listings at: myhoma.org/tours.

HoMA Nights

Every Friday, HoMA is open late with live entertainment, beverages and bites, and art experiences for all ages. **Learn more at:** myhoma.org/homanights

Doris Duke Theatre

One of HoMA's central gathering places, this 280-seat art house theatre offers independent films, performances, and a variety of public programs. **Film and event listings and tickets at:** myhoma.org/events.

Art School

Explore your creative side with hands-on studio art classes for youth and adults at the recently renovated Art School. **Class listings and registration at:** myhoma.org/artclasses.

Robert Allerton Art Library

A non-circulating art research collection with more than 40,000 art and culture books, periodicals, and catalogs. **The Reading Room is open to the public with museum admission. Hours:** Thursday–Sunday: 10am–2pm. Wednesdays by appointment.

Shangri La

In partnership with the Shangri La Museum of Islamic Art, Culture & Design, the HoMA facilitates public tours to Shangri La, Doris Duke's estate owned and operated by the Doris Duke Foundation for Islamic Art. **Tour tickets include same-day admission to HoMA. Tour times:** Thursday–Saturday: 9am, 11am, 1pm, 3pm. **Reservations required:** myhoma.org/shangri-la.

Admission

\$25 adults
\$15 Hawai'i residents with ID

Free for children age 18 and under
Free for HoMA members
Free for Hawai'i residents the third Sunday of each month
Free July 31 for Hawai'i residents in honor of Lā Ho'ihō'i Eā (Restoration Day)

Hours

Wednesday, Thursday, Saturday & Sunday:
10am–6pm

Friday: 10am–9pm

CLOSED

The Honolulu Museum of Art is closed Monday, Tuesday, January 1, July 4, Thanksgiving Day, and Christmas Day.

Parking

Parking lot is located behind Honolulu Museum of Art School, 1111 Victoria Street. There is an entrance on the left-hand side of Beretania Street. **\$5 for first 5 hours, \$2 every additional 30 minutes**

Honolulu Museum of Art

900 S Beretania St
808.532.8700
honoluluuseum.org
@[honoluluuseum](https://www.instagram.com/honoluluuseum)



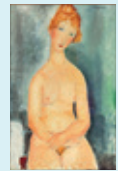
Museum collection

An encyclopedic art museum, HoMA has a permanent collection of more than 50,000 works of art spanning 5,000 years, from the Bronze Age to the present, from countries and cultures across the globe.

HoMA's collection is especially strong in Chinese and Japanese paintings, Korean ceramics, Buddhist and Shinto sculpture, South and Southeast Asian sculpture and decorative arts, and textiles from across Asia.

The museum's European and American collection of paintings, sculptures, decorative arts, textiles, and works on paper range in date from the Renaissance to the present. Highlights are major impressionist, post-impressionist and early modernist paintings, as well as significant paintings and sculptures from the 20th century. HoMA traces the history of art in Hawai'i with a gallery dedicated to Hawaiian traditional arts, art by Hawai'i artists, and art of Hawai'i.

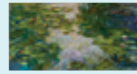
Highlights



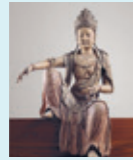
1
Amedeo Modigliani
Seated Nude, c. 1918



5
Satoru Abe
The Wheel, 1973



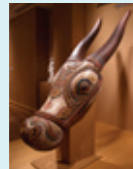
2
Claude Monet
Water Lilies, 1917/19



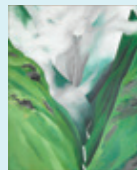
6
Guanyin,
c. 1025



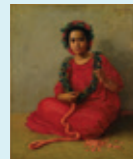
3
Vincent van Gogh
Wheat Field, 1888



7
Nandi Head,
late 18th
century



4
Georgia O'Keeffe
*Waterfall—No. III—
Tao Valley*, 1939



8
Theodore Wores
The Lei Maker,
1901

COVER (Gallery 1): Female Folded-Arm Figurine. Cycladic, 2500–2400 BCE. Marble with traces of polychrome. Purchase, Frank C. Atherton Memorial Fund, 1976 (4386.1).

WARD AVENUE



VICTORIA STREET

S BERETANIA STREET